



# REPORT

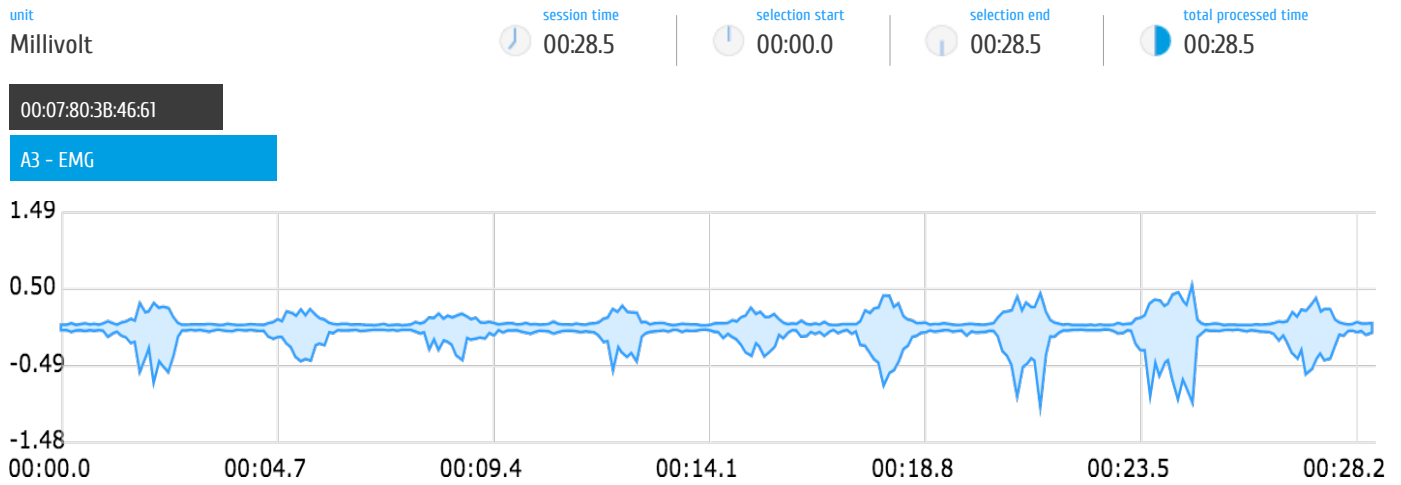
Wed Oct 11 2017 09:36:20 GMT+1

OPENSIGNALS VERSION: Public Build 2017-09-20

## Devices

name				address				type				sampling rate			
00:07:80:3B:46:61				00:07:80:3B:46:61				biosignalsplux				1000 Hz			
channel	label	sensor	resolution	channel	label	sensor	resolution	channel	label	sensor	resolution	channel	label	sensor	resolution
A3	PORT3_CHN1	EMG	16	IO	INPUT/OUTPUT	--	1								

## Electromyographic analysis



## Processed channels

00:07:80:3B:46:61

A3

**FILTER**  
applied bandpass - [10,100] Hz cutoff - Order: 6

**DETECTION OPTIONS**  
applied to TKE: smooth window of 0.5 seconds

## Muscle Activation results

### MVC

calculated from [current signal](#)

00:07:80:3B:46:61

channel: 3 | max amp (mV): 0.90483

### Activations

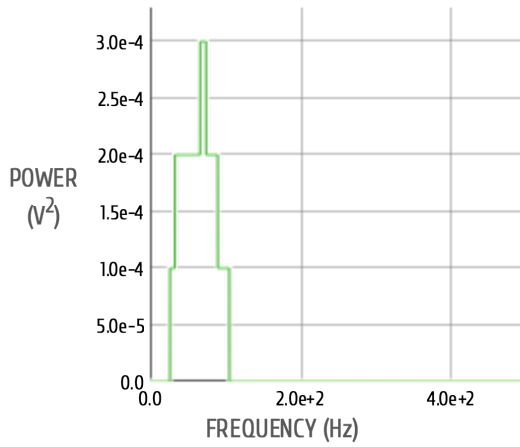
find [all muscle activations](#)

00:07:80:3B:46:61

channel	digital	activation	start (s)	end (s)	duration (s)	latency (s)	max (mV)	min (mV)	ampl+ (%)	ampl- (%)	ampl+- (mV)	rms (mV)	area (mV <sup>2</sup> )
3	NONE	1	1.541	2.363	0.822	1.541	0.292	-0.633	32	70	0.93	0.11	61.53
	NONE	2	4.845	5.526	0.681	4.845	0.212	-0.414	23	46	0.63	0.09	42.11
	NONE	3	8.438	8.755	0.317	8.438	0.159	-0.390	18	43	0.55	0.08	17.98
	NONE	4	11.815	12.494	0.679	11.815	0.256	-0.476	28	53	0.73	0.09	41.07
	NONE	5	14.780	15.366	0.586	14.780	0.228	-0.345	25	38	0.57	0.07	30.66
	NONE	6	17.424	18.319	0.895	17.424	0.393	-0.702	43	78	1.09	0.14	89.19
	NONE	7	20.420	21.479	1.059	20.420	0.396	-0.893	44	99	1.29	0.14	98.51
	NONE	8	23.412	24.688	1.276	23.412	0.475	-0.903	52	100	1.38	0.15	123.31
	NONE	9	26.713	27.667	0.954	26.713	0.346	-0.573	38	63	0.92	0.12	78.05
Diff	-	-	-	-	-	-	-	-	-	-	-	-	-
Ratio	-	-	-	-	-	-	-	-	-	-	-	-	-

1. ampl+ and ampl- are calculated as % of MVC.

## POWER SPECTRAL DENSITY



## Glossary

1. MVC: Maximum Voluntary Contraction.
2. TKE: Teager-Kaiser Energy operator.